

DSV-150 SERIES, 150WATT, 2:1 INPUT RANGE

FEATURES:

- ✓ 3 year warranty
- ✓ Six-side shielded metal case
- ✓ Low ripple and noise
- ✓ Over current and short circuit protection
- ✓ Remote on/off
- ✓ Adjustable output voltage



Model	Input voltage (Vdc)	Output voltage (Vdc)	Output current (A)	Efficiency Typ.
DSV150-1211		12	12.5	87%
DSV150-1212	12(9~18)	15	10	87%
DSV150-1213		24	6.25	87%
DSV150-2411		12	12.5	87%
DSV150-2412	24(18~36)	15	10	87%
DSV150-2413		24	6.25	87%
DSV150-4811		12	12.5	87%
DSV150-4812	48(36~72)	15	10	87%
DSV150-4813		24	6.25	87%
DSV150-11011		12	12.5	87%
DSV150-11012	110(72~144)	15	10	87%
DSV150-11013		24	6.25	87%

Notes:

1. Other input and output models may available on request;
2. Above models are default to metal case and with heatsink, plus "R" in the suffix.

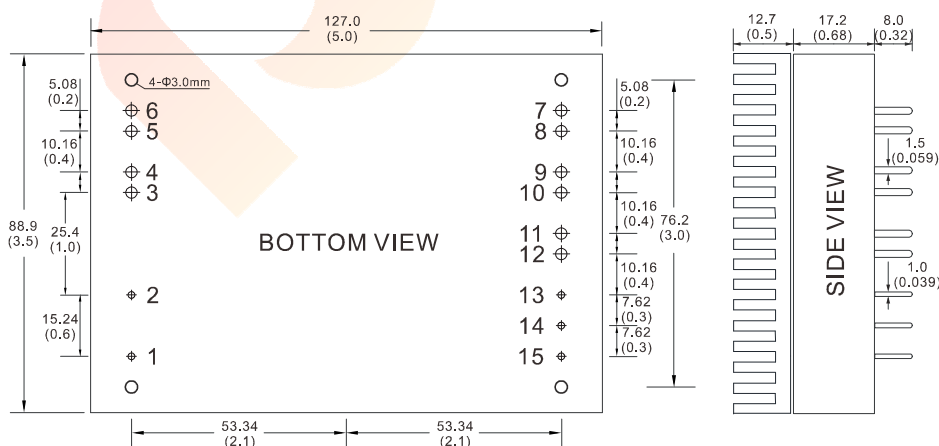
ELECTRICAL

Input voltage range	12V	9-18Vdc
	24V	18-36Vdc
	48V	36-72Vdc
	110V	72-144Vdc
Remote control (Low level remote)	High level or vacant	Turn on
	Low level or connect ground	Turn off
Output voltage accuracy	---	±1
Output voltage adjustable	---	±10% max.
Line regulation	Nominal Load, full voltage	±0.2%
Load regulation	20% ~ 100% rated load	±0.5%
Dynamic response (transient/recovery time)	5%-50%-75% load capability	$\Delta V_o1/\Delta t: \pm 4.0\%/500\mu s$

DSV-150 SERIES, 150WATT, 2:1 INPUT RANGE
ELECTRICAL

Ripple and noise	20MHz BM, full load	Vo≤5.0V, ≤50mVp-p Vo≥48V, ≤180mVp-p Other, ≤100mVp-p
Isolation voltage (<2mA/min)	Input to output Input to case	1500Vdc 500Vdc
Switching frequency	300KHz	330KHz max.
Turn-on delay time	---	≤200ms
Operating temperature range	Free air	-25°C to +55°C
Storage temperature range	---	-45°C to +105°C
Input under voltage protection	When input voltage is lower than the low input voltage	Auto-recovery
Over current protection	---	Auto-recovery
Short circuit protection	---	Continuous auto-recovery
Relative humidity	---	10%-90% max.
Weight	---	442.4g
MTBF	Bellcore TR-332, 25°C	2x10 ⁵ Hrs

Notes: Unless otherwise specified, all the parameters of the test conditions are as follows: ambient temperature 25°C, the nominal input voltage, pure resistive nominal load.

MECHANICAL

CONNECTION

PIN #	SINGLE
1	REM
2	CASE
3 4	-Vin
5 6	+Vin
7 8	+Vo
9 10	GND
11 12	No pin
13	+S
14	TRIM
15	-S

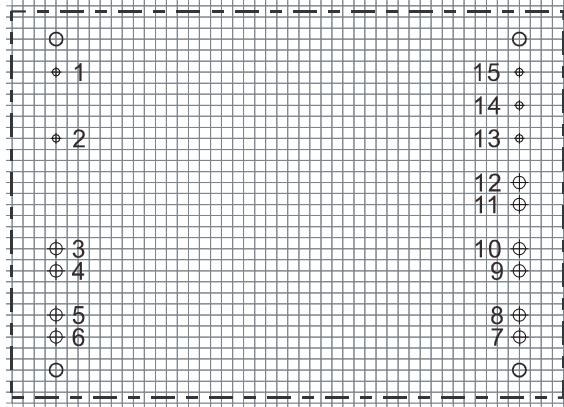
Note:

* Unit is mm(inch).

DSV-150 SERIES, 150WATT, 2:1 INPUT RANGE

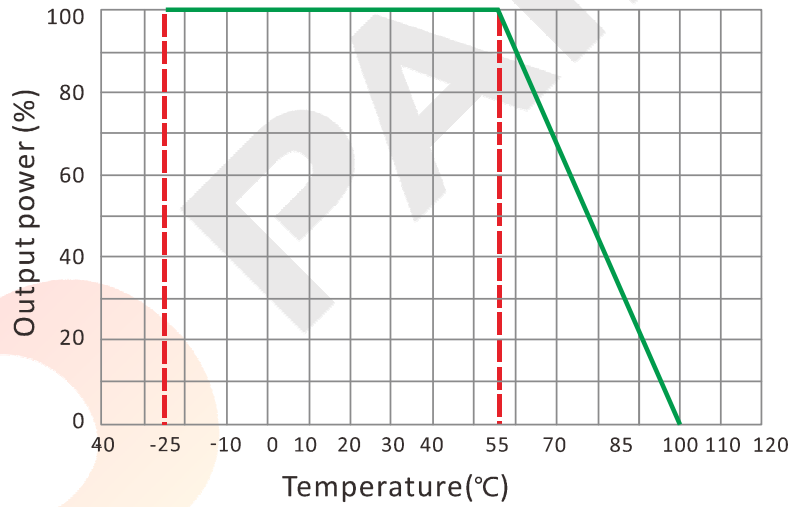
MECHANICAL

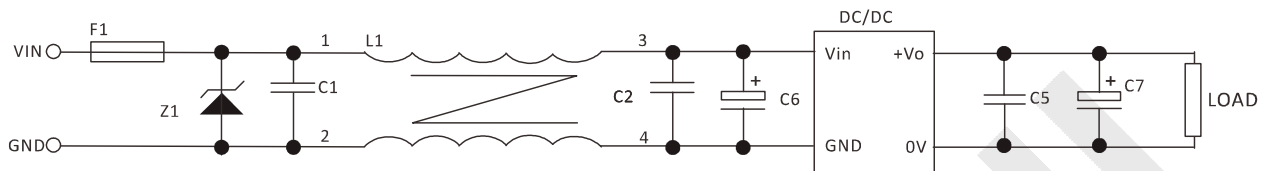
LAYOUT



Unit: mm(inch)
PCB vertical view
Grid spacing: 2.54mm(0.1inch)
Note: PIN#1, 2, 13, 14, 15: $\Phi=1.0\text{mm}$,
others $\Phi=1.5\text{mm}$

TEMPERATURE PROFILE



DSV-150 SERIES, 150WATT, 2:1 INPUT RANGE
NOTES
RECOMMENDED TEST AND APPLICATION CIRCUIT


1. TVS&FUSE be helpful with over voltage protection and inrush limiting. Recommended FUSE better be 1.5~2times of the rated current .
2. The input filter capacitor C6 could select the aluminum electrolytic capacitors or tantalum capacitors, and the withstand voltage should be greater than the highest input voltage. Recommended capacitor should be between 22 μ F~100 μ F.
3. C1,C2 for the input filter capacitor,0.1~1 μ F high-frequency ceramics capacitor or chip capacitor are recommended. The withstand voltage of output filter C5, C7 should be greater than the highest output voltage. Recommended capacitor of C7 better within 100 μ F and C5 connected with the chip to reduce the input voltage peak, recommended 0.1~1 μ F high-frequency ceramics capacitor or chip capacitor.